

MODEL 2732HF

PRODUCT FEATURES

2 HP Grinder Pumps

60 Hz

visit our web site:
zoellerpumps.com

APPLICATIONS

- Low pressure sewer systems
- High head sewage systems
- Domestic, commercial, wastewater and sewage

MATERIAL FEATURES

PUMP:

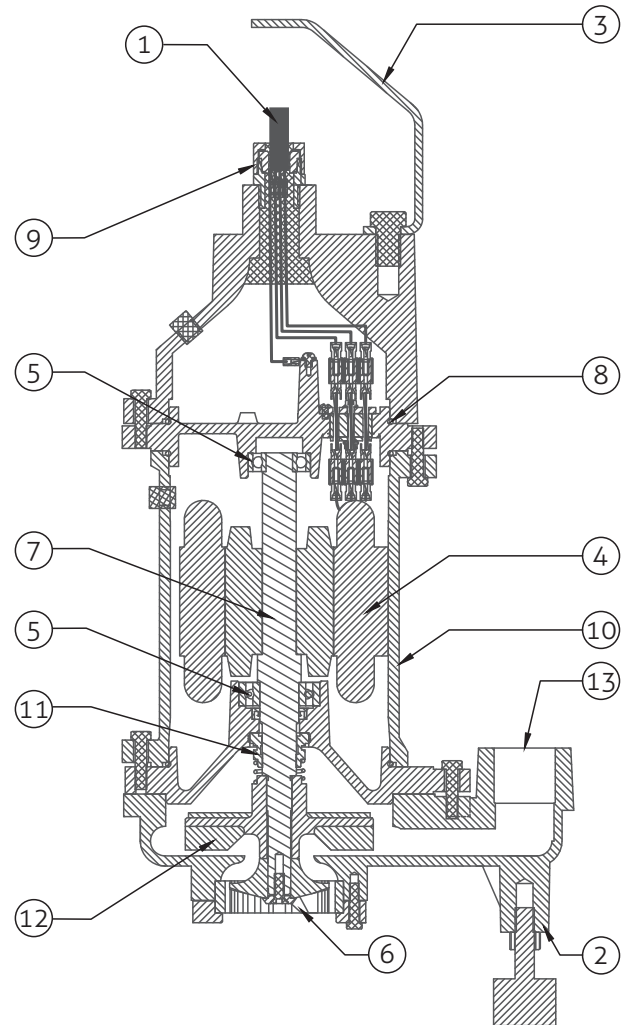
- Hardened 440 stainless steel (Rockwell 55-60) shredding ring and cutter
- 1-1/4" NPT discharge
- Single silicon carbide mechanical seal with secondary lip seal
- Cast iron ASTM A48 Class 30
- Attaching hardware - 304 stainless steel
- The cord seal is epoxy-potted for superior moisture resistance and anti-wicking
- Ductile iron impeller for superior quality and long life

MOTOR:

- 2 HP, 3450 RPM
- 3 Phase - 380 Volt
- Stator - Class B insulation and lead wires Nema B design
- Oil-filled motor for better cooling and lubrication
- Housing - cast iron
- Power cable length - 30' (9 m)
- Ball bearings - upper and lower high carbon chromium steel

FEATURES

1. 30' (9 m) power cable.
2. Cast iron support legs enable the pump to be free-standing.
3. Stainless steel lifting bail.
4. Stator - Class B insulation and lead wires Nema B design. Class B motor insulation is double-dipped and baked.
5. Upper and lower high carbon chromium steel ball bearings.
6. Stainless steel shredding ring and cutter hardened to Rockwell 55-60.
7. Stainless steel shaft and hardware resist corrosion.
8. Buna-N O ring seals.
9. Triple sealed design compression grommet - outer jacket seal epoxy potted - inner conductor seal.
10. Cast iron ASTM A48 Class 30 strength.
11. Single silicon carbide mechanical seal with secondary lip seal.
12. Semi - open vortex impeller design, fully balanced with integral pump-out vane to clear debris.
13. 1-1/4" NPT discharge. Concentric pump housing with centerline discharge reduces radial loading for longer bearing and shaft seal life.



MODEL 2732HF

TECHNICAL DATA

2 HP Grinder Pumps

MODELS:	<input type="checkbox"/> 2732HF
MODE:	NON-AUTO
PUMP NAME PLATE HORSEPOWER:	2
MAXIMUM KW INPUT:	3.2
STANDARD IMPELLER DIAMETER:	4.755" (120.8 mm)
DISCHARGE SIZE:	1-1/4" NPT

IMPELLER TYPE:	SEMI-OPEN	SINGLE SEALS:	STANDARD
CUTTER & PLATE:	440 C SS HARDENED TO ROCKWELL 55-60	MOTOR DESIGN LETTER:	NEMA B
PUMP NET WEIGHT:	93 lbs. (42 kg)	POWER CORD LENGTH: ft (m) (30' [9 m] STANDARD)	<input type="checkbox"/> 50' (15.2 m)
O RINGS:	BUNA-N	POWER CORD:	14 GAUGE STOW
MOTOR SHAFT:	SS410	STATOR & LEAD WIRES INSULATION:	CLASS B
RPM:	3450	MAXIMUM STATOR TEMPERATURE:	266 °F (130 °C)
MOTOR TYPE:	SUBMERSIBLE		

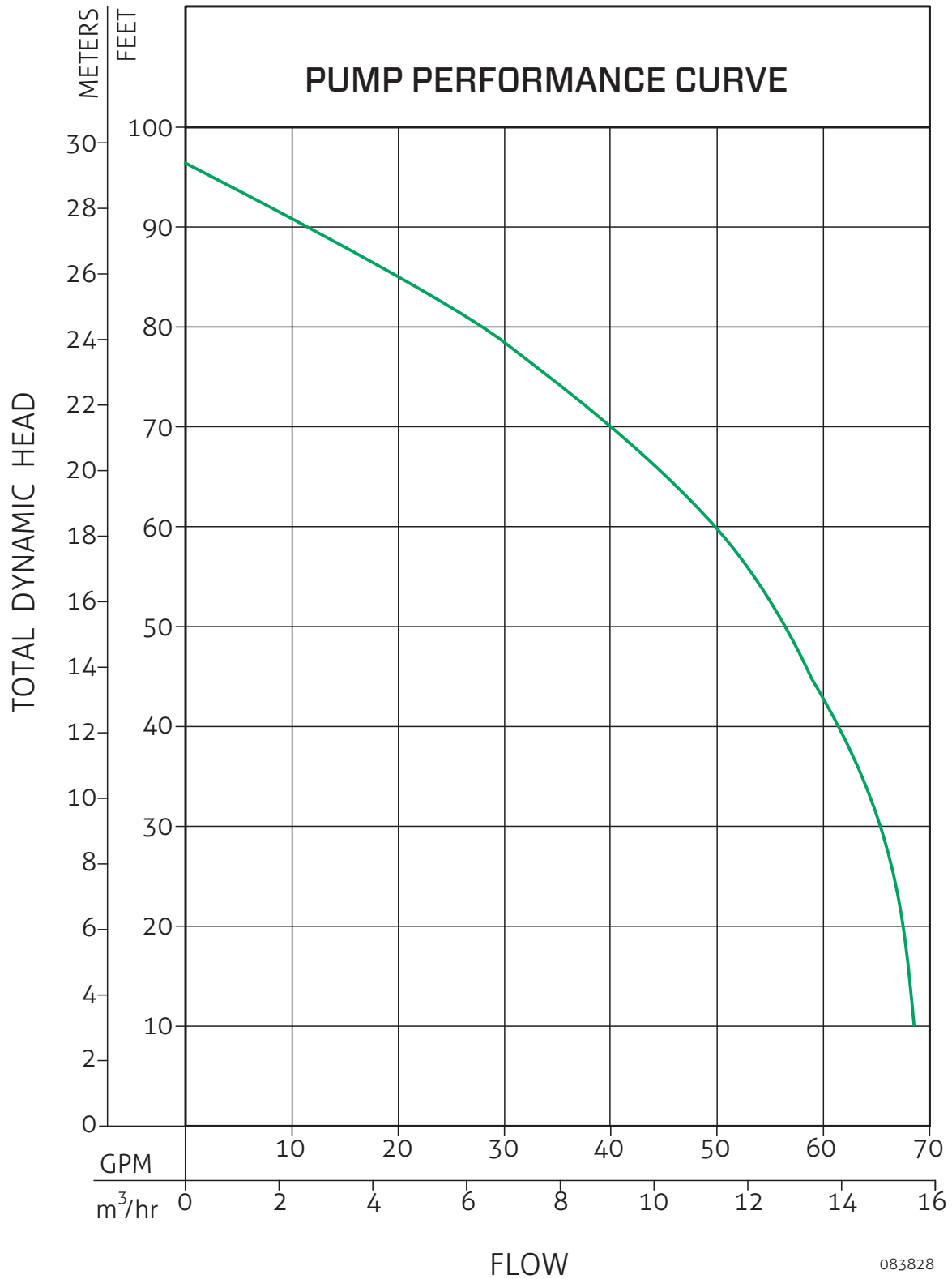
SHAFT SEAL CONSTRUCTION:	STANDARD	SILICON CARBIDE/SILICON CARBIDE
STANDARD SENSING DEVICES	MOTOR THERMAL SHUTOFF	--
IMPELLER MATERIAL	2732HF	STANDARD DUCTILE IRON
IMPELLER TRIM:	<input type="checkbox"/> OPTIONAL	DESIGN POINT: ____ GPM @ ____' TDH, IMPELLER DIA. ____"
MAXIMUM WATER TEMPERATURE:		104 °F (40 °C) Continuous, 140 °F (60 °C) Intermittent

MODEL	HP	<input type="checkbox"/> 380V / 3 PH	
		FLA	LRA
2732HF	2	5	--

RESERVE POWERED DESIGN

For unusual conditions a reserve safety factor is engineered into the design of every Zoeller® pump.

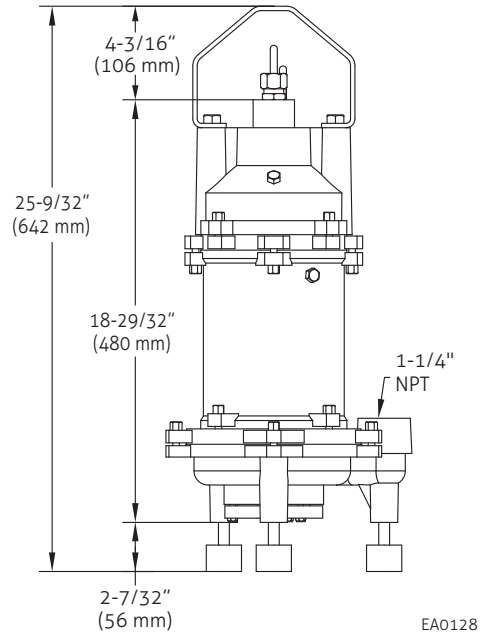
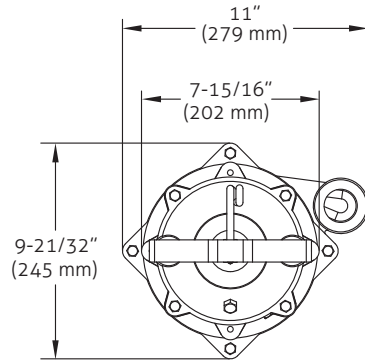
MODEL 2732HF
PERFORMANCE CURVE
2 HP Grinder Pumps



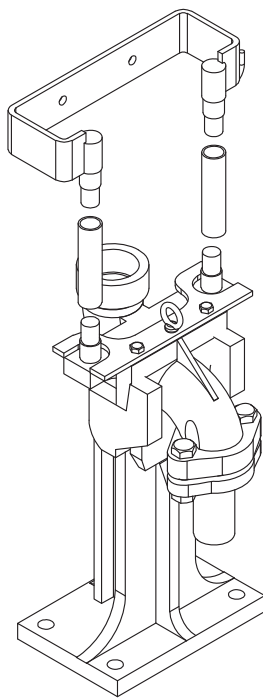
MODEL 2732HF

DIMENSIONAL DRAWING

2 HP Grinder Pumps



EA0128



2039-0006

