



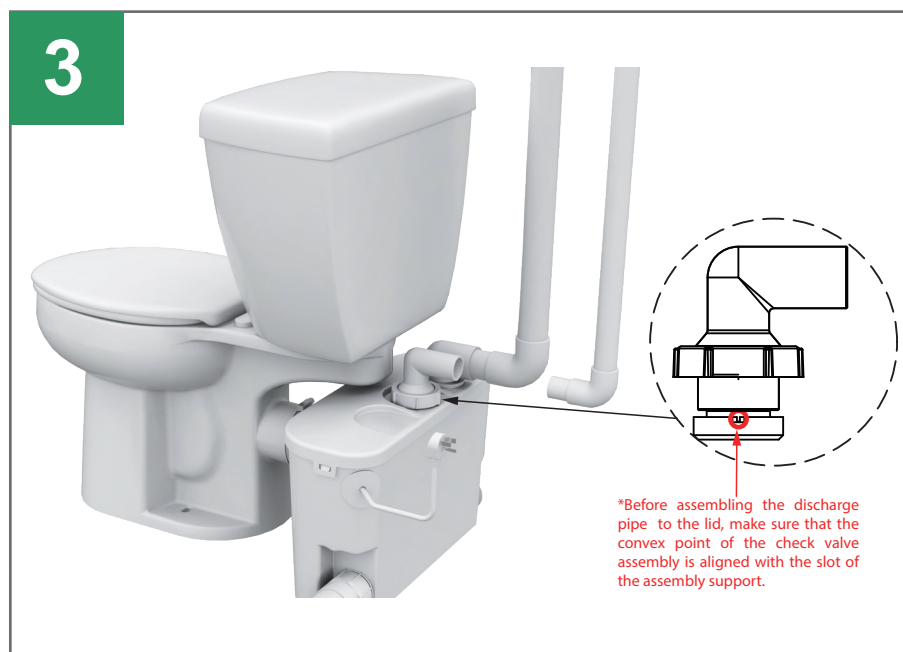
QWIK JON®
PREMIER MODEL #201



Connect the rear discharge toilet to the front inlet of the Qwik Jon® Premier. Ensure the connections are in accordance with local, regional, and state codes.



Connect the drain pipe from another bathroom fixture to the side inlet on the Qwik Jon® Premier. Notice the side inputs have built in check valves and are compatible with many piping sizes. The pipe adaptor needs to be cut in the center. Ensure the connections are in accordance with local, regional, and state codes.



Connect the vent and discharge pipe to the top of the Qwik Jon® Premier.



The Qwik Jon® Premier has an inlet on either side allowing side inlet connections from other bathroom fixtures.



Plug the power cord into a wall socket to provide power to the unit.



FIRE/ EXPLOSION HAZARD.

Do not pump flammable or explosive fluids such as gasoline, fuel oil, kerosene, etc. Do not use in a flammable and/or explosive atmosphere. Failure to follow these warnings could result in death or serious injury and/or property damage.

All plumbing (discharge and vent lines) must be installed to meet the requirements of the Plumbing Code of Australia. Unit must be vented. Some codes may require this unit to be installed by a qualified licensed plumber. DO NOT USE AN AUTOMATIC PLUMBING VENT DEVICE.