

Notice to Installer: Instructions must remain with installation.

Applications include laundry tray pump, wet bar sink, lavatory, air conditioning condensate or dehumidifier water removal. All plumbing (discharge and vent lines) must be installed to meet the requirements of the Plumbing Code of Australia. Unit must be vented. Some codes may require this unit to be installed by a qualified licensed plumber. DO NOT USE AN AUTOMATIC PLUMBING VENT DEVICE.

ZT0100_Eb
0324
Supersedes
0122

Trusted. Tested. Tough®

Product information presented here reflects conditions at time of publication. Consult factory regarding discrepancies or inconsistencies.

Register your
 Zoeller Pump Company
 Product on our website:
<http://reg.zoellerpumps.com/>






50 Hz

Visit our website:
www.zoellerpumps.com

DRAIN PUMP SYSTEM
 MODEL 133 (Preassembled)
 INSTALLATION INSTRUCTIONS
 PREINSTALLATION CHECKLIST

1. Inspect your pump. Occasionally, products are damaged during shipment. If the unit is damaged, contact your dealer before using. Do Not remove the test plug in the cover.
2. Carefully read the literature provided to familiarize yourself with specific details regarding installation and use. These materials should be retained for future reference.

 WARNING SEE BELOW FOR LIST OF WARNINGS	 CAUTION SEE BELOW FOR LIST OF CAUTIONS
1. To reduce the risk of electrical shock, a properly ground ed receptacle of grounding type must be in stalled and protected by a ground fault circuit interrupter (GFCI) and in accordance with local codes. 2. Make certain that the receptacle is with in the reach of the pump's power supply cord. DO NOT USE AN EXTENSION CORD. Extension cords that are too long or too light do not deliver sufficient voltage to the pump motor and could present a safety hazard if the insulation were to become damaged or the connection end were to fall into the sump. 3. Testing for Ground. As a safety measure, each electrical outlet should be checked for ground using an Underwriters Laboratory Listed circuit analyzer which will indicate if the power, neutral and ground wires are correctly connected to your outlet. If they are not, call a qualified electrician. 4. FOR YOUR PROTECTION, ALWAYS DISCONNECT THE PUMP FROM ITS POWER SOURCE BEFORE HANDLING. Single phase pumps are supplied with a 3-prong grounded plug to help protect you against the possibility of electrical shock. DO NOT UNDER ANY CIRCUMSTANCES, REMOVE THE GROUND PIN. 5. Installation and checking of electrical circuits and hard ware should only be performed by a qualified licensed electrician.	1. Check to be sure your power source is adequate for handling the voltage requirements of the motor, as indicated on the pump or basin plate. 2. Make sure the pump electrical supply circuit is equipped with fuses or circuit breakers of proper capacity. A separate branch circuit is recommended, sized according to the current shown on the pump namplate. 3. All plumbing (discharge and vent lines) must be installed to meet the requirements of the Plumbing Code of Australia. Unit must be vented. Some codes may require this unit to be installed by a qualified licensed plumber. DO NOT USE AN AUTOMATIC PLUMBING VENT DEVICE. 4. CHECK VALVE MUST BE USED TO REDUCE UNNECES- SARY CYCLING OF PUMP. 5. Dewatering pumps are not designed or intended for handling raw sewage. 6. Maximum operating temperature must not exceed 40 °C. 7. For health reasons, do not unplug, turn off, or disable pump and use pump tank system as a way to fill up a sink or laundry tray, etc. 8. The rubber coupling used on the check valve is rated for 0.3 kg/cm² (3 m of head) and a maximum temperature of 54.4 °C, if the static head is more than 3 m, use glue fittings instead of the rubber couplings.
	REFER TO WARRANTY ON PAGE 2.

DO NOT USE FOR PUMPING OILS, GASOLINE OR ANY PETROLEUM BY-PRODUCTS.

Limited Warranty

Manufacturer warrants, to the purchaser and subsequent owner during the warranty period, every new product to be free from defects in material and workmanship under normal use and service, when properly used and maintained, for a period of one year from date of purchase by the end user, or 18 months from date of original manufacture of the product, whichever comes first. Parts that fail within the warranty period, one year from date of purchase by the end user, or 18 months from the date of original manufacture of the product, whichever comes first, that inspections determine to be defective in material or workmanship, will be repaired, replaced or remanufactured at Manufacturer's option, provided however, that by so doing we will not be obligated to replace an entire assembly, the entire mechanism or the complete unit. No allowance will be made for shipping charges, damages, labor or other Charges that may occur due to product failure, repair or replacement.

This warranty does not apply to and there shall be no warranty for any material or product that has been disassembled without

prior approval of Manufacturer, subjected to misuse, misapplication, neglect, alteration, accident or act of God; that has not been installed, operated or maintained in accordance with Manufacturer's installation instructions; that has been exposed to outside substances including but not limited to the following: sand, gravel, cement, mud, tar, hydrocarbons, hydrocarbon derivatives (oil, gasoline, solvents, etc.), or other abrasive or corrosive substances, wash towels or feminine sanitary products, etc. in all pumping applications. The warranty set out in the paragraph above is in lieu of all other warranties expressed or implied; and we do not authorize any representative or other person to assume for us any other liability in connection with our products.

MANUFACTURER EXPRESSLY DISCLAIMS LIABILITY FOR SPECIAL, CONSEQUENTIAL OR INCIDENTAL DAMAGES OR BREACH OF EXPRESSED OR IMPLIED WARRANTY; AND ANY IMPLIED WARRANTY OF FITNESS FOR A PARTICULAR PURPOSE AND OF MERCHANTABILITY SHALL BE LIMITED TO THE DURATION OF THE EXPRESSED WARRANTY.

In those instances where damages are incurred as a result of an alleged pump failure, the Homeowner must retain possession of the pump for investigation purposes.

Service Checklist



⚠ WARNING

ELECTRICAL PRECAUTIONS - Before servicing a pump, always shut off the main power breaker and then unplug the pump - making sure you are not standing in water and wearing insulated protective sole shoes. Under flooded conditions, contact your local electric company or a qualified licensed electrician for disconnecting electrical service prior to pump removal.

Submersible pumps can become pressurized under normal operating conditions - allow 2.5 hours after disconnecting before attempting service.

CONDITION	COMMON CAUSES	REMEDY
A. Pump will not start or run.	Low voltage, blown fuse, open circuit	Have a electrician check house wiring.
	Impeller bound	Contact a Zoeller Distributor.
	Motor or wiring shorted	
	Debris on float switch	Remove debris.
B. Motor overheats and trips overload or blows fuse.	Incorrect voltage, negative head (discharge open lower than normal) impeller or seal bound mechanically, defective capacitor or relay, motor shorted.	Contact a Zoeller Distributor.
C. Pump starts and stops too often.	Float too tight on rod, check valve stuck, or none installed in long distance line, overload open, switch defective.	Contact a Zoeller Distributor.
D. Pump will not shut off.	Debris under float	Remove debris from around float.
	Faulty float switch	Contact a Zoeller Distributor.
E. Pump operates but delivers little or no water.	Debris around intake	Clean area around intake.
	Blockage in discharge pipe	Remove pipe and flush out debris.
	Low or incorrect voltage	Have a electrician check house wiring.
	Damaged Impeller	Contact a Zoeller Distributor.
	Incorrect motor rotation. Capacitor defective. Incoming water containing air or causing air to enter pumping chamber.	Contact a Zoeller Distributor.
	Pump is air locked	Make sure vent hole in discharge pipe is clear.
F. Drop in head and/or capacity after a period of use.	Vertical lift too high	Change discharge piping or Contact a Zoeller Distributor.
	Increased pipe friction, clogged line or check valve. Abrasive material and adverse chemicals could possibly deteriorate impeller and pump housing.	Check line. Remove base and inspect.
G. tank or fittings leak.		Carefully tighten pipe joints (use pipe dope) and screws. Check gasket location, tighten lid evenly. Do not over tighten fittings or screws.

If the above checklist does not uncover the problem, consult the factory - Do not attempt to service or otherwise disassemble pump. Service must be by Zoeller Authorized Service Stations.

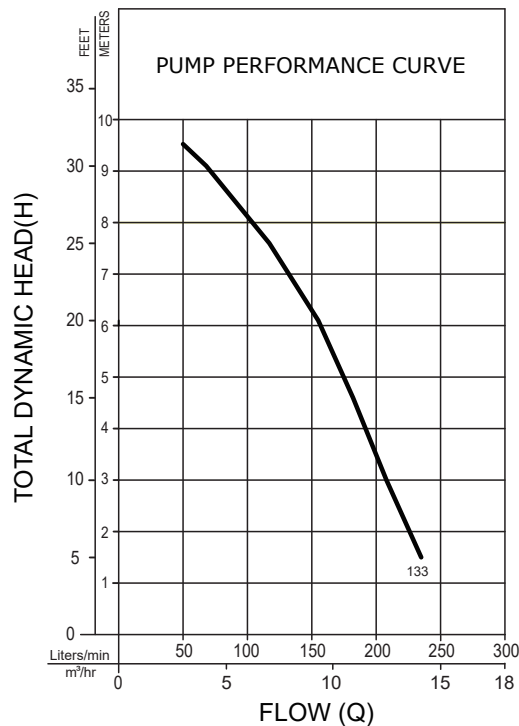
Helpful Hints For Easy Installation

1. Read all instructions before beginning installation.
2. Be certain that basin is on a firm level surface.
3. Do not use an automatic plumbing vent device.
4. Always use a check valve on the discharge line.
5. Test operation of pump per STEP 3.
6. Always provide some means to disconnect basin from plumbing for maintenance purposes.
7. Run unit at least once a month to verify proper operation.
8. The model number and date code can be found on the lid warning label.
9. Plug pump into a properly grounded GFCI receptacle.

Do's And Don't's For Installing A Unit

1. DO read all installation material included with the pump.
2. DO inspect unit for any visible damage caused by shipping. Contact dealer if unit appears to be damaged.
3. DO always disconnect pump from power source before handling. DO always connect to a separately protected and properly grounded ground fault protected circuit. DO NOT ever cut, splice or damage power cord. DO NOT carry or lift pump by its power cord. DO NOT use an extension cord.
4. DO NOT use a discharge pipe smaller than the pump discharge size.
5. DO test pump immediately after installation to be sure that the system is working properly.
6. DO review all applicable local and national codes and verify that the installation conforms to each of them.

Performance Characteristics



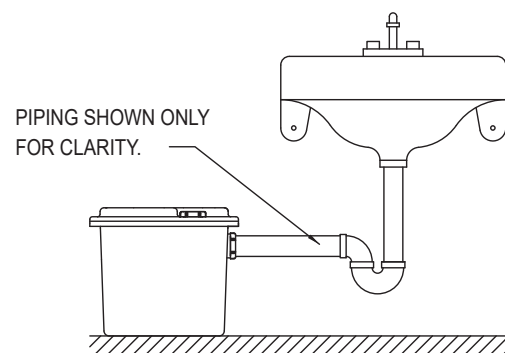
TOTAL DYNAMIC HEAD/FLOW DEWATERING ONLY			
SERIES		133	
Feet	Meters	Liters /min	m³/hr
5	1.5	235	14.1
10	3.0	208	12.5
15	4.6	182	10.9
20	6.1	155	9.3
25	7.6	117	7.0
30	9.1	68	4.0
31	9.5	53	3.2

STEP 1

Determine Installation Configuration

NOTE: This preassembled unit is designed for use with an external trap.

Figure 1 is a typical configuration for installation of the drain system. The actual configuration will vary depending on your cabinet and sink configuration.



STANDARD INSTALLATION

Figure 1

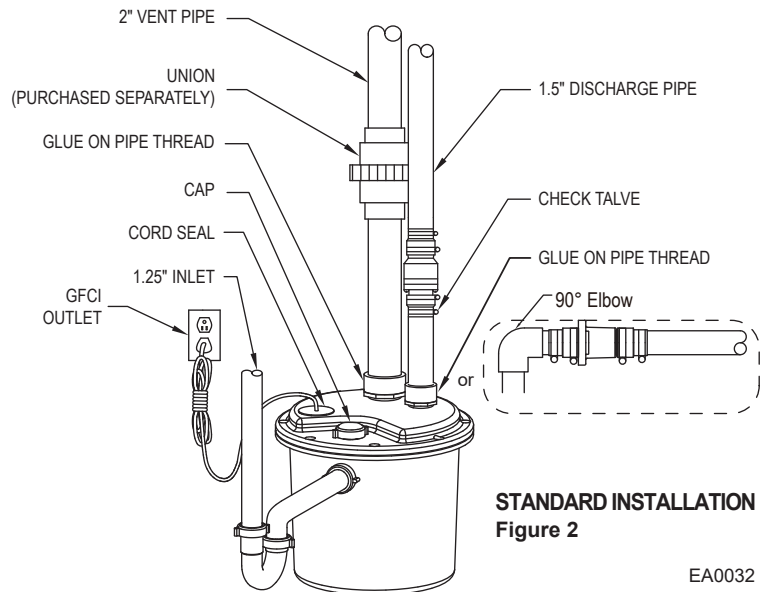
SK2001

STEP 2

Final Assembly

NOTE: External plumbing configuration will vary depending on the location of basin, location of main stack and available space.

Place the basin assembly in its final position and complete plumbing. Secure all connections shown in Figure 2.



EA0032

STEP 3

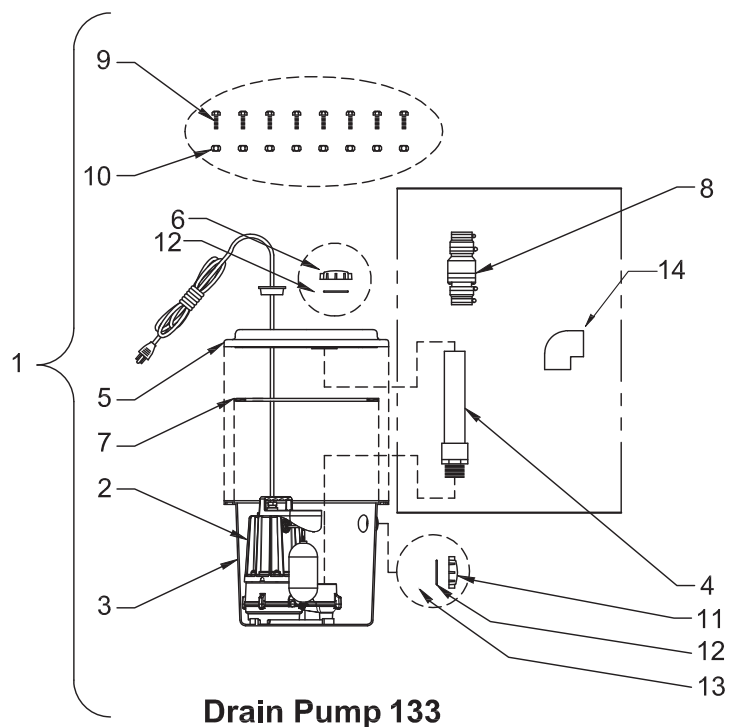
Initial Testing of Drain Basin System

1. Plug the cord into a properly grounded GFCI receptacle.
2. Fill the basin with 7.5 - 11 liters of water and let sit for 3 - 4 minutes to enable the environmentally safe peanuts to begin dissolving.
3. Slowly fill the basin with water.
4. Check all plumbing for leaks as the basin fills.
5. Verify that the pump starts and stops.
6. Check the discharge line for leaks as the pump empties the basin.
7. Repeat steps 2 through 6 as necessary to ensure proper operation.
8. If problems persist, refer to the troubleshooting guide located on page 2 of this manual.

Illustrated Parts Breakdown

	MODEL 133	
ITEM	DESCRIPTION	QTY
1	Drain Pump	1
2	Replacement Pump	1
3	Basin-Tank	1
4	Discharge Tube	1
5	Basin-Lid	1
6	Cap w/o-ring	1
7	Basin Seal	1
8	Unicheck	1
9	Screw S.S.	8
10	Nut S.S.	8
11	Pipe Cap w/o-ring	2
12	O-Ring	2
13	Packing	1
14	*90° Elbow	1

* This is a standard part of a specific model, please refer to the replacement list for details.



Drain Pump 133

EA0033